

QPEC No. 7 Spl Rubber Lined

QPEC No. 7 Spl 316ss

QPEC No. 7 Spl Urethane Lined

Applications

Quinn offers a complete line of continuous pilot plant and small commercial size flotation cells. The units are used in mineral, chemical, environmental, and industrial applications requiring the dispersion of fine air or gas bubbles in slurries or liquids.

Advantages

The Quinn Portable No. 7 Flotation Cell was developed specifically for applications where it is desirable to subject a substantial volume of slurry to the flotation process on either a batch or a continuous basis. The use of smaller conventional batch cells would be too time consuming and thereby expensive.

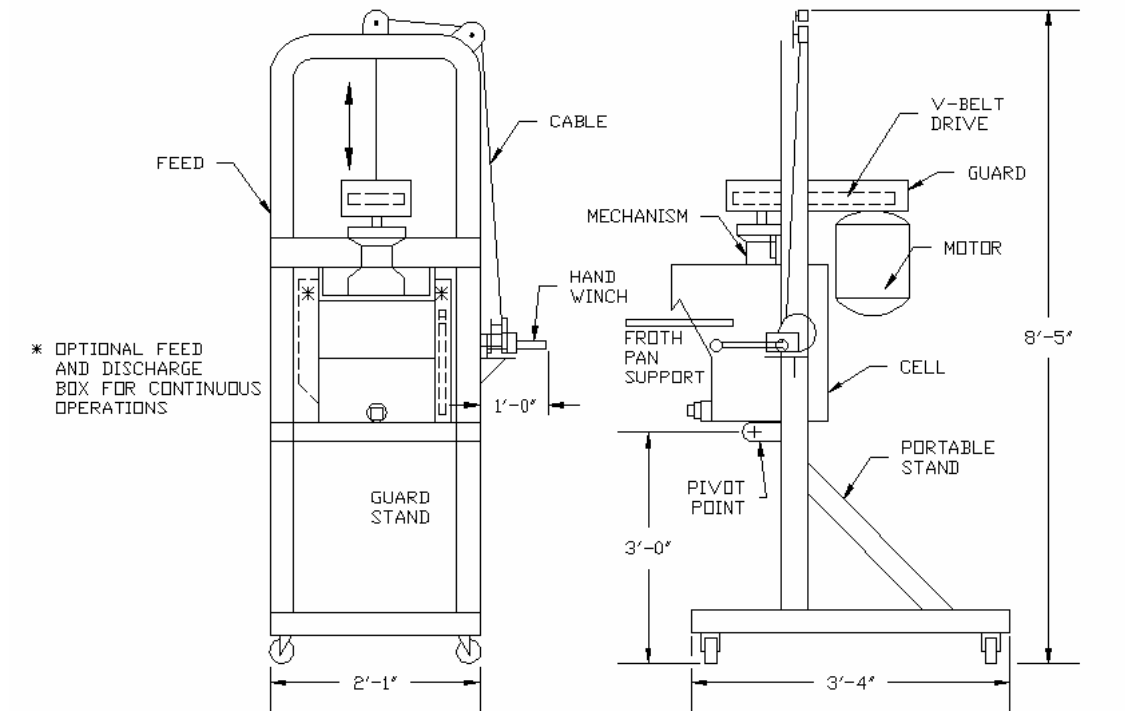
Upon completion of a flotation test, the unit is designed to either drain the tank through the bottom outlet or to raise the mechanism and tilt the tank into "dumping" position. The use of this feature minimizes dilution required to remove the contents which, in certain applications, is very important and it also provides a quick method of discharging the tank contents.

For continuous operation, the unit can be provided with a feed box and discharge box equipped with an adjustable weir for froth level control.

Mechanism design self induces air requirements though external pressure air may be added if required.

The unit is mounted on locking type casters for convenience of portability and storage. For batch operation, brackets are provided in the front of the cell for conveniently supporting a froth collection pan.

(Dimensions and specifications on reverse side.)



Specifications

Size: No. 7, 1.35 cu. ft. total volume (1.0 cu. ft. effective volume).

Mechanism: Enclosed aluminum spindle-bearing assembly. Polyurethane impeller and diffuser, mild steel shaft and assembly. Manual air control valve.

Lifting device: Manual heavy duty winch.

Tank: Mild steel with pivoted base, adjustable froth level boards. Bottom drain outlet.

Drive: Vari-pitch V-belt drive provides wide range of speed adjustment.

Drive guard: OSHA type guard.

Motor: 3/5 hp, 1760 rpm, 1 phase, 60 Hertz, 115 or 230 volt; 3 phase, 60 Hertz, 230/460 volt; or as required.

Frame: Heavy duty portable support frame mounted on four locking type casters.

Paint: Rustoleum primer and green enamel finish.

Assembly: Unit shipped completely assembled.

Corrosion-resistant construction: Units also available with wetted parts of SS 316 construction.

Optional

Feed discharge boxes for continuous operation. Optional item.